

# D-Sub Connector IDC Type H=1.0mm

## ■ MATERIAL

Insulator : Polyester  
Contact Pin : Copper Alloy

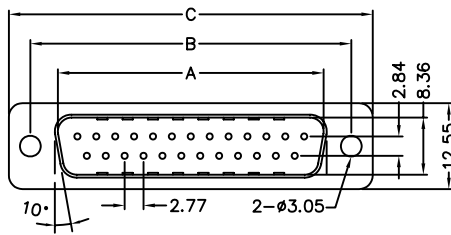
## ■ SPECIFICATION

Current Rate : 3 AMP  
Insulation Resistance : 1000MΩMin. at DC 500V  
Contact Resistance : 20mΩMax. at 1 AMP  
Operation Temperature : -55°C to +105°C

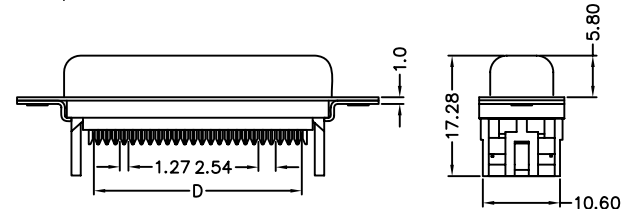
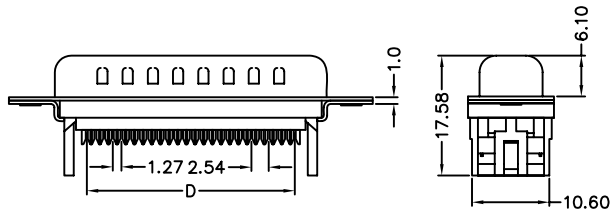
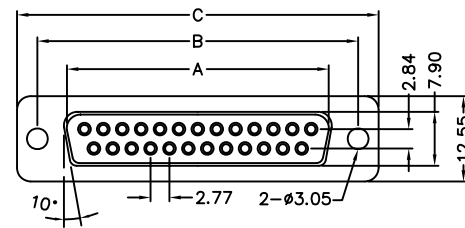


## ■ Detail Dimensions

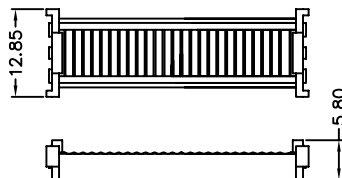
982-41-Axxx01



982-41-Bxxx01



Cover



Plastic SR



Metal SR



## ■ Order Information

982-41- x xx x 0 1  
1 2 3

- 1. A: Male  
B: Female
- 2. No. of contacts
- 3. 0: Black Insulator ; Metal SR  
1: Black Insulator ; Plastic SR  
2: Black Insulator ; without SR

- 3: Blue Insulator ; Metal SR
- 4: Blue Insulator ; Plastic SR
- 5: Blue Insulator ; without SR

Standard Parts
982-41-Axxx01
982-41-Bxxx01

## ■ Number Of Contacts

Unit: mm

Poles	DIM A	DIM B	DIM C	DIM D		Poles	DIM A	DIM B	DIM C	DIM D			
9	16.92	24.99	30.81	10.16		9	16.33	24.99	31.16	10.16			
15	25.50	33.32	39.14	17.78		15	24.66	33.32	39.42	17.78			
25	38.96	47.04	53.04	30.48		25	38.38	47.04	53.34	30.48			
37	55.42	63.50	69.32	45.72		37	54.84	63.50	69.68	45.72			